



**FOR THE LOVE OF SEWING**



## Espire

A part of the Quilter's Dream Series, the Espire blends luxury with ease. It quilts with speed and precision at 1,000 stitches per minute and an Automatic Fabric Sensor System. You can even pivot your quilts without interrupting your stitching with an Advanced Pivoting Feature that drops the needle down while leaving the foot up. Easily browse through and edit the programmable 343 built-in stitches with the LCD Touch Screen and save new stitches you've created to your machine. There's even a USB port that connects to your PC to save stitches on your computer and download machine upgrades. See the machine that Eleanor Burns quilts on.

### Technology Features

- USB direct connect (Type B)



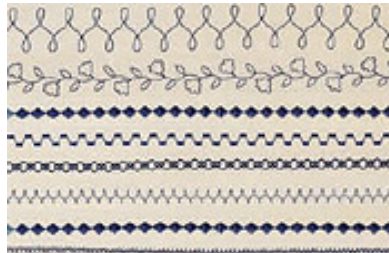
- LCD Touch Screen (240 x 320 dot matrix) with touch pen



- Advanced needle threader
- Automatic thread cutter
- Quick-Set, top-loading bobbin with sensor
- Quick-Set bobbin winder

### Advanced Sewing Features

- 343 Built-in stitches including



- 135 Utility with 12 one-step buttonhole styles
  - 110 Decorative
  - 14 Satin
  - 15 Decorative satin
  - 12 Cross
  - 57 combinable Utility stitches
- 3 built-in alphabets
- Stitch length 0.0mm - 5.0mm
- Maximum utility stitch width: 7mm
- Utility stitch editing capabilities
  - Store personal stitch settings for each Utility

### Additional Information

- Language conversion capabilities (3 languages)
- Warranty (25 years limited, 10 years parts, 5 years computer circuit, 5 years electrical, 1 year labor)
- Optional Gold Standard service and support program for your peace-of-mind (available in U.S.)

### Instructional and Help Resources

- Built-in Help Messages
- Built-in Operational Guide
- Built-in Sewing Application Guide

- Automatic drop feed
- Independent bobbin winding system
- Automatic sensors



- Thread Tension Control makes adjustments to feed thread properly
  - Automatic Fabric Sensor System continuously adjusts presser foot pressure to feed fabric evenly
  - Upper and lower thread sensors to alert when threads are broken
- 5 LED lights that illuminate the needle and work area



- Sewing speed up to 1,000 spm

## Downloadable Software from [www.babylock.com](http://www.babylock.com)

Your Espire will stay current with future upgrades via USB connection

stitch on machine

- Decorative stitch editing capabilities
  - Edit and combine Character/Decorative stitches
  - 16 Memory Pockets for Character/Decorative stitches equaling 224KB
  - Store additional stitch combinations on your PC using the USB (type B) port
  - Back to the Beginning key, returns to the beginning of a decorative stitch pattern
- Mirror-image
- Lock key for Utility and Decorative stitches
- Lateral and diagonal feeding
- Variable needle positions
- Fully automatic built-in darning
- Twin needle settings

## Convenient Sewing Features

- Convenient One-Touch Buttons for
  - Start/Stop
  - Reverse sewing
  - Needle up/down
  - Thread cutter
  - Automatic presser foot lift
- Ergonomic hands-free presser foot lift with extra high setting
  - 10mm automatic and 13mm manual
- Advanced pivoting feature

## Included Accessories

- Knee lifter
- Touch pen (stylus)
- USB cable
- 13 Snap-on feet:
  - Buttonhole
  - Overcasting
  - Monogramming
  - Zipper
  - Zigzag
  - Blind stitch
  - Button fitting
  - Free-motion quilting
  - Free-motion open toe quilting
  - Free-motion echo quilting
  - Walking
  - 1/4" quilting with a guide
  - Straight stitch
- Quilting guide
- Soft cover for machine
- Straight stitch needle plate
- Bobbins
- Cord guide bobbin cover
- Thread stand
- Seam ripper
- Twin needle
- Extension table
- Plus more



- Programmable needle up/down
  - Needle plate with scale in inches and centimeters
  - Bobbin cover with measurements for center needle position
  - Free arm
  - Two accessory storage compartments
-